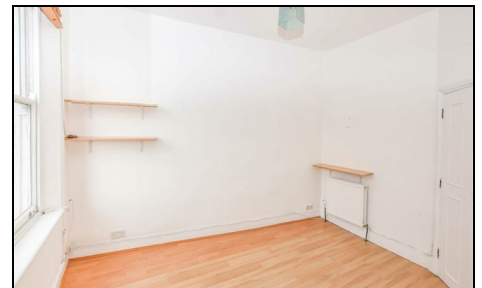


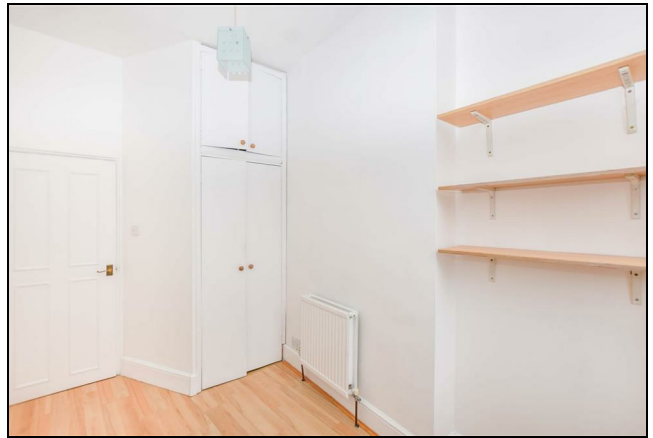
Bedford Hill Balham, SW12 9HA

£1,400 Per Month



****AVAILABLE 26TH JUNE 2026**** This is a cosy and bright one bedroom flat, situated in the heart of Balham, within 100 yards of the Northern Line Underground Station and National Railway Station. There are a vast variety of bars, restaurants, shops and supermarkets nearby. The property comprises of an open plan kitchen / living room, double bedroom and bathroom with shower. Unfurnished.

- One Bedroom
- Excellent Transport Links
- Heart Of Balham Location
- Unfurnished
- Available 26th June 2026
- First months rent in advance
- Damages deposit = five weeks deposit
- No Agency Fees
- Council Tax : Wandsworth B
- EPC Rating : C



Energy Efficiency Rating		Current	Potential
<i>Very energy efficient - lower running costs</i>			
(92 plus)	A		
(81-91)	B		
(69-80)	C	70	72
(55-68)	D		
(39-54)	E		
(21-38)	F		
(1-20)	G		
<i>Not energy efficient - higher running costs</i>			
England & Wales		EU Directive 2002/91/EC	

For Free Mortgage Quote and Best Mortgage Rates, call an Ellisons Mortgage Advisor on 020 8544 0518



Although these particulars are believed to be correct, their accuracy is not guaranteed and they do not form part of any contract.

Celebrating 30 years of successful Sales and Lettings in Merton

